



COVID-19 lockdowns are set to destroy the jobs of a staggering 66,000 South Australians with the jobless rate forecast to hit 13.3% in June, up from 6.5% in March¹

Demand for our Inner City services including Emergency Relief, the WestCare Centre and the Community Food Hub, has already increased by close to 30%. We regularly have queues outside our Community Food Hub. Without the ongoing, generous support of individuals, churches, local businesses and other agencies, our already stretched resources would be at breaking point.

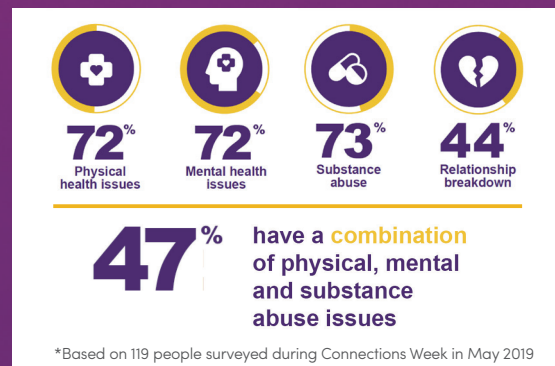
We expect that more South Australians than ever will need our help in coming months.

“We are in the midst of the greatest economic challenge of our time”

Premier Marshall, April 2020

¹Australian Industrial Transformation Institute, Flinders University May 2020

People experiencing homelessness are already dealing with a myriad of problems.



Social isolation is something they experience on a daily basis.

Robert lives in his own place, but he is unemployed and struggling financially. He has emphysema and suffers from recurrent chest infections.

While he does have a regular GP, Robert’s biggest barrier to healthcare is his difficulty in keeping appointments and losing prescriptions.

“Why do I drink so much?” Robert responds when asked. “I was in a car accident and it dulls the pain from my injuries. But most of all, it helps my broken heart from when Pam (his wife) died... of cancer”.

He goes on to say, “The team at WestCare... helped me find somewhere to live - they listen and encourage me to keep going. A hot meal and chat - it changes my day and gives me hope for tomorrow”.

Let’s offer Robert and others like him some dignity and basic necessities.

- \$40** Nutritious breakfast & lunch for 2 weeks
- \$60** Family food parcel for four
- \$105** Pastoral care – dedicated one on one time with a support worker
- \$250** Specialist support including housing assistance, legal counsel & health support



Baptist Care SA’s WestCare Centre is open six days a week and receives no government funding. It relies on the generosity of our donors to continue its vital services.

DONATE NOW by visiting www.baptistcaresa.org.au or complete the response form overleaf and return it to us today.

YES, I want to stand with Adelaide's most vulnerable when they need it most.

Winter Appeal 2020

Name: _____
Organisation: _____
Address: _____
Telephone: _____
Email: _____

My Gift is: Monthly Once off I'm interested in leaving a gift in my will.

Amount \$60 \$40 \$105 \$250 Other Amount \$ _____

Payment type: VISA Mastercard Cheque

Card Number: _____

Expiry Date: _____ / _____ CCV: _____

Name on Card: Signature:

Cheque:
Please make cheques payable to: **Baptist Care SA**

Thank you for your gift.
A tax deductible receipt will be sent to you promptly.

Mail to:
Fundraising Team
130 Rose Terrace, Wayville SA 5034
baptistcaresa.org.au

Please do not send any further appeal material.

Who are we?

Beginning in 1913, Baptist Care SA has grown to over 1000 dedicated staff and volunteers, working tirelessly to help South Australians achieve their full potential. We're committed to working with the State's most disadvantaged, championing local issues and connecting with people to enable positive change.

It isn't easy tackling such tough issues, but our clients' successes mean it's often extremely rewarding.

Learn more about us at baptistcaresa.org.au



WestCare Centre
11 – 19 Millers Court Adelaide SA 5000
T 08 8118 5200

Open Monday to Friday 9.00am – 3.00pm
Sunday 11.30am – 1.00pm

If assistance is required outside business hours, please contact the SA Homelessness Gateway on 1800 003 308.

Alone. Together.

Standing with Adelaide's most vulnerable when they need it most.
Offering dignity to more than 130 people every day, six days a week.

