



SERVING TO TRANSFORM LIVES

Annual REPORT

2015/2016



BAPTIST CARE'S *Vision*

Baptist Care, motivated by Christ's servant heart, aspires to be a leading, life transforming agency founded in a faith community engaged in client focused care.

BAPTIST CARE'S *Mission*

Baptist Care expresses God's love and compassion for people, especially those at risk or marginalised, by journeying with them toward the attainment of their full potential.

BAPTIST CARE'S *Values*

INTEGRITY – ensuring personal and corporate transparency and the highest ethical standards

COMPASSION – treating people and communities with empathy, dignity and fairness

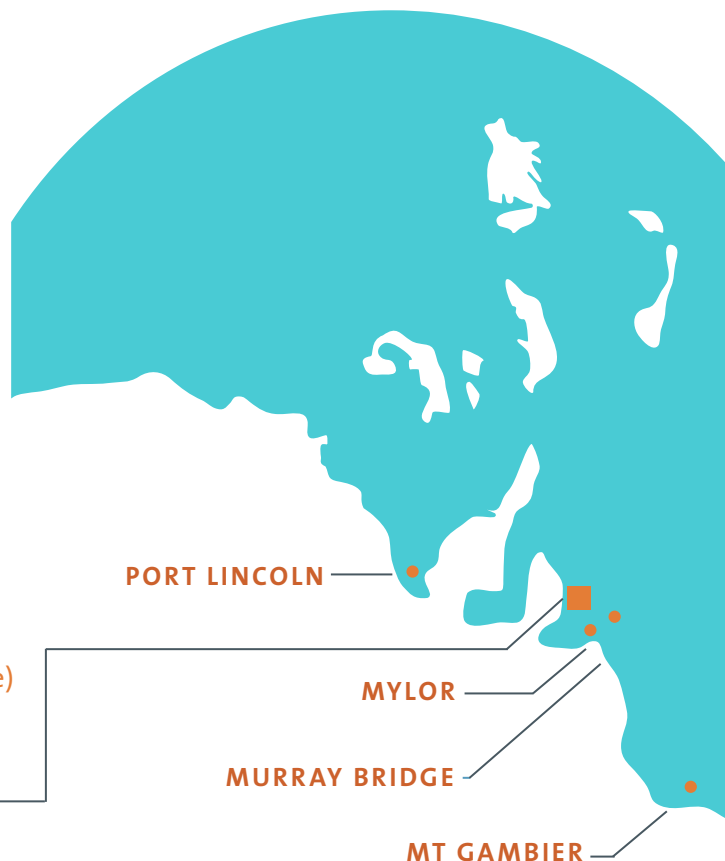
EMPOWERMENT – releasing individual strengths that promote personal and community transformation

INNOVATION – fostering a culture of continuous improvement, staff engagement and improved client outcomes

OUR LOCATIONS

ADELAIDE

- **Wayville** (Head office)
- **Inner City Adelaide** (includes WestCare Centre)
- **Hallett Cove**
- **Salisbury**
- **Melrose Park**



CONTENTS

About us	4
A snapshot of our services	5
Chair's report	6
CEO's report	7
Baptist Care's WestCare Centre	9
Mylor Adventure Camp and Adventure Services	10
Fuse Friendship Program	11
Care Services	12
Baptist Care Church Ministry Service	14
Our people	15
Volunteering	16
Environmental report	17
Quality and excellence	18
Governance	19
Board members	20
Financial statements	22
Acknowledgements	26
Thank you	26
Can you help?	27

ABOUT US

OUR STORY



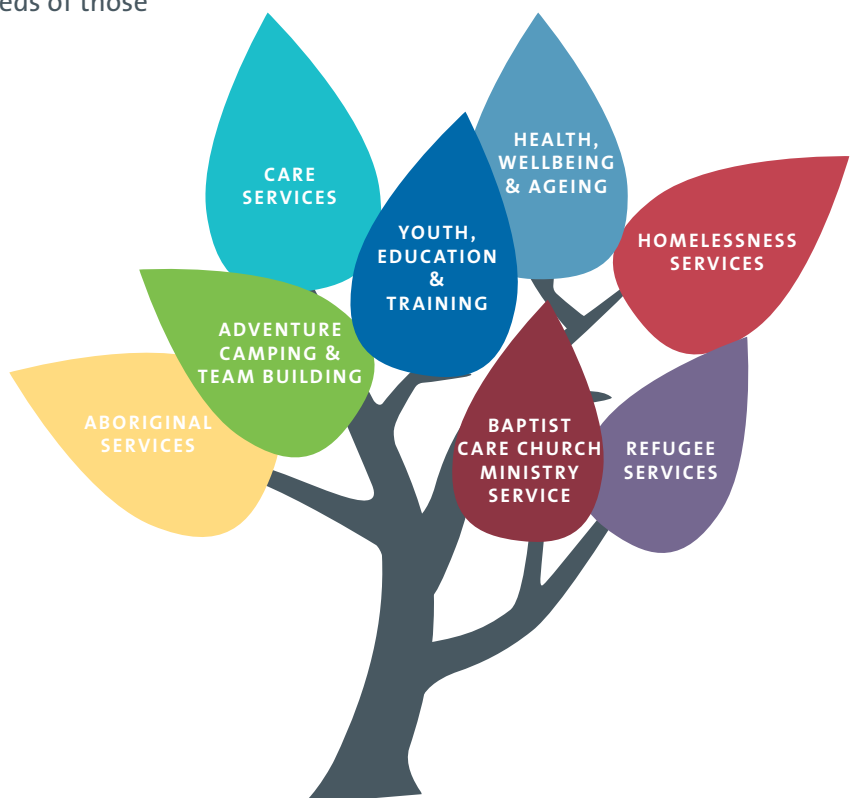
Baptist Care in South Australia is a leading provider of community services with just under 800 staff working with a diverse range of people in need. We commenced in 1913 as the West End Baptist Mission and it has been our privilege to serve our community for over 100 years.

Today, we are still strongly grounded in our Baptist community, and Jesus Christ's servant mindset informs our motto, *Serving to Transform Lives*. This also underpins our client centred practice in respect to recognising we exist primarily to meet the needs of those we serve.

Our clients range from children in the care of the state, to the homeless, people with a disability, youth at risk, the Aboriginal community, those dealing with mental health issues and new Australians needing a friend. Our work also includes support for churches in the area of community care ministry.

We hope you enjoy reading about this year of lives changed as together we cared for some of the most vulnerable people in South Australia.

OUR services



A SNAPSHOT OF OUR SERVICES

We provided services to over 13,000 people in 2015/2016 (excluding those visiting WestCare and Mylor bed nights). Here are some highlights:

ABORIGINAL SERVICES

- Suicide Prevention Program - 79 clients supported

CARE SERVICES

- Spina Bifida - 247 episodes of nursing care provided for 90 clients
- Alternative Care - 115 clients
- Disability Care - 31 clients

ADVENTURE CAMPING & TEAM BUILDING

- Mylor Adventure Camp - 18,400 bed nights
- Tumbelin - 100+ clients

YOUTH, EDUCATION & TRAINING

- Successful Transitions - 40 young people transitioned into education or employment
- FLO (Flexible Learning Options) - 88 young people engaged in education and employment through intensive case management
- CLC (Community Learning Centre) - 86 young people engaged in an alternative education learning centre
- NASC (Northern Adelaide Senior College) - 39 young people supported

HOMELESSNESS SERVICES

- Baptist Care WestCare Centre - 20,065 meals for homeless and disadvantaged clients
- Direct support to clients at WestCare - 305 times
- WestCare Community Transition Worker - 151 clients
- Emergency Relief food parcels - 900
- Aboriginal homelessness (Eastern Adelaide) - 339 clients
- Homeless youth (Southern Adelaide)
 - 4297 bed nights provided
 - 389 clients via outreach services

HEALTH, WELLBEING & AGEING

- Community Links (for help with isolation) - 16,547 hours of services (Baptist Care and subcontractors)
- Building Family Opportunities - connected with 78 families and supported 133 individuals within the families
- Family Mental Health Support Services - supported 351 short term clients, 170 long term clients and provided 101 instances of community education
- Accommodation Support Program (Eyre) - 10 clients and 1048 hours delivered

REFUGEE SERVICES

- Baptist Care Fuse Friendship Program - 50 people matched with a mentor

BAPTIST CARE CHURCH MINISTRY SERVICE

- Conferences, training, workshops - 281 people from 18 Baptist churches
- Certificate IV in Chaplaincy and Pastoral Care - 4 students from 3 churches
- Chaplaincy - supported 6500 families

CHAIR'S REPORT



THIS YEAR, BAPTIST CARE HAS SEEN SIGNIFICANT GROWTH AS WE CONTINUE “SERVING TO TRANSFORM LIVES”. WE HAVE BEEN READY TO SERVE GOD BY CARING FOR THE DISADVANTAGED AND MARGINALISED, WHILST DISPLAYING THE VALUES OF INTEGRITY, EMPOWERMENT, INNOVATION AND COMPASSION.

Prior to 2016, Baptist Care had been through many years of change. During those years, through the leadership of Paul Scully, Allan Priest, the Board, and the Management team, a solid foundation was laid that has enabled the organisation to be nimble in its response to community and government requirements. We thank God for His provision and their diligence during this time.

It takes special people to work for Baptist Care and we are fortunate to have people that genuinely love others and are willing to do selfless acts. We thank all employees, volunteers and support personnel for their dedication and service to the community. Some situations can be quite challenging and we ask that you continue to uphold all workers in your prayers, that they may have wisdom and the love of Christ in all situations.

There has been a strong focus on the strategic plan this year. Some of the outcomes of

this include an increased focus on our faith foundation, growth in disability care and the NDIS, client centred care and accreditation, Mylor improvement plan, the Baptist Care Church Ministry, collaboration with other Baptist entities within Australia and advocacy for the disadvantaged, to name a few.

The Baptist community has been a great support to Baptist Care through prayer and an increased level of engagement. A couple of years ago at Assembly it was determined that there needed to be more interaction between Baptist Care and the Churches. Changes were made by establishing a board sub-committee dedicated to this interaction. Since that time several programmes have been started or expanded, with an allocation of resources such as Dr Anne van Loon, Rev Joanna Hubbard, Rev Ian Warner, Vicky Legge and Bryan Hughes, to minister and engage with the churches. It is pleasing to see the level of engagement is greater than it ever has been and we look forward to this interaction continuing.

We welcomed new Board members Frances Hardy and Allan Packer this year. Both have made significant contributions to the Board. We also will say goodbye to Robert Lunn who finishes his term with us in November. We thank him for his expertise and support; he will be sadly missed. At the beginning of the year Rev Michael Mills shared with the Board how we might have vigorous debate, drawing on the experience of Paul and Barnabas in the Book of Acts. This has assisted us in our discussions and interactions, as we seek to find wisdom in all situations.

We thank our generous donors who have enabled unfunded work to continue, such as feeding and caring for the homeless in the city. This saw us have the ability to open Baptist Care's WestCare Centre overnight, during adverse weather in winter.

We appreciate your continued prayers and support and we look forward to working together to fulfil our mission.

Timothy Johnson

CEO'S REPORT



IN A TIME OF SO MUCH UNCERTAINTY IT IS VITAL FOR US AT BAPTIST CARE TO BE CLEAR ABOUT WHO WE ARE, WHY WE EXIST AND WHERE WE ARE GOING.

Fundamental to our story is our Christian mandate that we are here to serve and support people as they transform their lives. To do this, we have worked on four strategic goals over the last year.

ENHANCED ENGAGEMENT WITH LOCAL CHURCHES

Our work with local churches has included providing oversight of Baptist hospital chaplaincy, consultancy support on Asset Based Community Development and training in areas such as pastoral care, youth work and health from a faith perspective.

CLIENT CENTRED PRACTICE

Being client centred is easy to say but harder to do. In developing our disability services we have been working toward a genuine individual response to clients. Client centred care is only achievable because of the commitment of Baptist Care staff to make a difference in clients' lives. We see the National Disability Insurance Scheme as an opportunity to shine as a provider of disability services.

BUILDING TRUST

Building trust starts with us being dependable and reliable in service delivery. To do this, one of the areas we continue to work on is effective recruitment, depth of training and transparent service delivery. Our commitment to child protection has seen us raise the standards of practice even higher this year with the assistance of Child Wise.

PREMIER WORKPLACE

Just as we want staff to care for clients we want to care for our staff. One major project to improve staff's workplace experience has been the Psycho Safety Culture project where we identify how Baptist Care can improve in four key areas which contribute to staff wellbeing.

THANK YOU!

In the last year we grew not only in number and income but more importantly Baptist Care grew in good news stories of lives transformed during changing times. A big thank you to the Board, staff and volunteers who collectively help make Baptist Care good news for our clients.

Paul Scully



A YEAR ^{OF}
lives
CHANGED

BAPTIST CARE'S
**WESTCARE
CENTRE**

PATRICK AND HIS FAMILY



Thank You!

Earlier this year, you may have seen the story of Patrick and his three children who were homeless.

Thanks to donations from our generous community, we have been able to help Patrick make some good changes in his life.

Baptist Care's WestCare Centre was there for Patrick when he most needed it and now we are helping him through our other services.

Patrick is now living in transitional accommodation where he can stay for 18 months. This stability has been great for the children and they are back in school and kindy. What a great result!

Thank you to all the churches, supporters, volunteers and others who donate time and money to support Baptist Care's WestCare Centre.

TO MAKE A DONATION, PLEASE VISIT WWW.BAPTISTCARESA.ORG.AU.

20,065

MEALS WERE
SERVED AT
WESTCARE IN THE
LAST YEAR

DUE TO
SEVERE WEATHER,
WESTCARE WAS
OPENED FOR 4 NIGHTS
IN THE WINTER, HELPING

80 PEOPLE
WHO HAD NOWHERE
ELSE TO GO

MYLOR
ADVENTURE
CAMP
&
ADVENTURE
SERVICES



88 SCHOOLS



18,400 BED NIGHTS



25+ CHURCH GROUPS
Including Vietnamese,
Chinese, & Arabic



25+ DISABILITY
GROUPS



15+ OTHER GROUPS
Scouts, Country Fire Service,
YMCA, Scrapbooking/Quilting,
Sporting Clubs, St John
Ambulance and many more



Baptist Care

10 INTERNAL SERVICES

GOOD TIMES AND GREAT IMPACT

It's always great to hear what those who've used the Mylor Adventure Camp have to say about their visit. Here are some of our highlights.

“Brilliant setting. Safe, professional instructors, very well organised, good preparation for activities/group. Pride is evident in the workplace. Fun!”

“The staff are excellent with the students and provide a fun, varied and challenging array of activities. The organisation of events and the facilities are consistently reliable.”

“We had a wonderful camp. The campsite itself was comfortable, fun, and enabled us to meet our objectives for relational and spiritual growth for our group. Thank you!”

A LITTLE FACE LIFT

Early this year the Chapel and the Riverview Retreat Centre were given some love and attention with new lights and a new coat of paint. Both spaces look great and we look forward to them being enjoyed this year. There has also been a concerted effort on the grounds with garden beds restored, trees pruned and the addition of picnic tables and chairs scattered over the campsite.

ADVENTURE SERVICES

2015/16 was a busy and challenging year with adventure-based programs delivered across the State from Mt Gambier to Murray Bridge to Pt Lincoln. Piti Menarki (“Young Men Getting Whiskers”) for young Aboriginal men was a highlight, as was more than 100 young men and women participating in our Tumbelin (“Awaken and Live”) alcohol and other drug harm reduction program. We also collaborated with other departments to run adventure therapy programs for young men and women under the Guardianship of the Minister.

Fee-for-service programs were delivered for a diverse range of clients from SAPOL, Relationships Australia, Carers SA, Salvation Army and Second Chances SA (formerly Prison Fellowship).



FUSE
FRIENDSHIP
PROGRAM

FINDING COMMON GROUND AND MAKING FRIENDS

Close your eyes for a minute. Just imagine that you are forced to leave a country that you love because you know that your life is in danger. Eventually you get to a safe space, but everything is different.

This is so far from what many of us experience in beautiful Adelaide, yet all around us there are people who are living a very lonely life trying to make sense of an unknown city and country.

Mary, a young woman from Sri Lanka, was in this same situation. “You can sometimes feel isolated when you move to a new country”, Mary said.

She was introduced to Claire through the Fuse Friendship Program and has found that very helpful.

“MEETING WITH CLAIRE IS VERY GOOD AND WE HAVE A LOT OF FUN TOGETHER”.

The Fuse Friendship Program matches local volunteers to new arrivals in ‘buddy’ relationships.

Volunteers come from all walks of life, faith backgrounds, and include men and women,

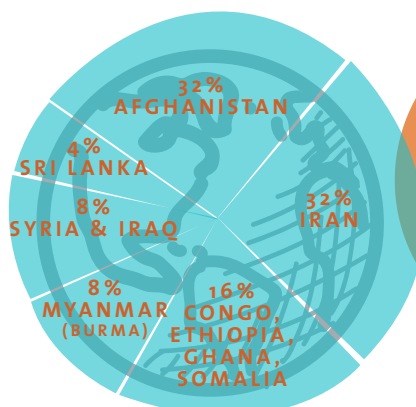
couples, singles and families, ranging in age from 22 to 80 years of age.

The refugees and asylum seekers in the program are also very diverse - including people from Afghanistan, Iran, Syria, Sri Lanka and Ethiopia. Through the Fuse Friendship Program, people grow in understanding of each other, help each other to learn and celebrate their common humanity.

Claire is enthusiastic about Fuse, saying **“MY ADVICE TO ANYONE CONSIDERING BECOMING A VOLUNTEER IS JUST TO TRY IT – YOU CAN LEARN SO MUCH ABOUT DIFFERENT CULTURES AND MAKE GREAT FRIENDS.”**

If you would like to become part of Baptist Care’s Fuse Friendship Program, please contact Bryan Hughes on **8273 7100** or **fuse@baptistcaresa.org.au**. Alternatively visit our website **www.baptistcaresa.org.au** for more information.

THE PERCENTAGE OF REFUGEES/ASYLUM SEEKERS IN THE PROGRAM ARE FROM



50 PEOPLE FROM A REFUGEE BACKGROUND WERE MATCHED WITH A BAPTIST CARE FUSE VOLUNTEER IN 2015-16.

CARE SERVICES



TRAUMA INFORMED CARE AND PERSON CENTRED APPROACH

Baptist Care is committed to supporting South Australia's most vulnerable individuals and families within the areas of Alternative Care and Disability Care. In addition, a centralised 'Care Operations' team support both portfolios including shared Allied Health and Therapeutic Services.

2015-2016 has again seen significant growth in demand for services in both Alternative Care and Disability Care across the Adelaide Metro, Adelaide Hills and Limestone Coast regions. Feedback from our clients, families and key stakeholders

continues to reflect the high level of client centred care being delivered.

The outcomes achieved wouldn't have been possible without the commitment and hard work of staff in these services, in particular the Support Workers who have played a critical role in the lives of our clients and have supported the organisation in achieving National Standards for Disability Services, South Australian Standards for Alternative Care, and QIC Standards.

ALTERNATIVE CARE

CHILDREN AND
YOUNG PEOPLE AGED
0-18 YEARS UNDER
GUARDIANSHIP OF THE
MINISTER



DISABILITY CARE

CHILDREN, YOUNG PEOPLE
AND ADULTS WITH AN
INTELLECTUAL DISABILITY



CARE SERVICES

CHALLENGE ACCEPTED

YOUTH - STABILISATION ASSESSMENT AND TRANSITION SERVICE (SATS)

Having a goal and working towards it - that's one of the big aims of our program with young people who are under the Guardianship of the Minister.

Aged just 14-17, these teenagers are survivors, having experienced more than many of us have ever had to endure. This last year, thanks to some hard work by all involved, we celebrated as six of our young people completed the 12 week SATS (Stabilisation Assessment and Transition Service) adventure program which also supports their involvement in the Duke of Edinburgh program.

This is a tough endeavour for anyone and our young people have learnt some big lessons like stepping outside of their comfort zone, taking calculated risks, being courageous, working as a team and so much more. The best part is how they feel after all the hard work. 'I FEEL SO PROUD OF MYSELF' said one happy client.

We look forward to what the next year will bring!

SPINA BIFIDA AND HYDROCEPHALUS SERVICE

Thanks to the generosity of many donors, for the last two years, Baptist Care has been able to provide the Spina Bifida and Hydrocephalus service to clients. With the coming of the NDIS (National Disability Insurance Scheme), clients have now been transferred to the new funding model which means this service is being wound down. We would like to take this time to thank our volunteers and donors for their contribution, and special thanks to our fantastic nurse Barbara Oerman, whose dedicated support for clients has been highly valued.

FOR A COPY OF OUR
NDIS BROCHURE
PLEASE VISIT
WWW.BAPTISTCARESA.ORG.AU



SUPPORTING LOCAL CHURCHES AND COMMUNITIES

The Baptist Care Church Ministry team seeks to build relationship with local Baptist churches and explore ways in which the knowledge and expertise of Baptist Care can be released to support churches in engaging more effectively with their community.

THESE ARE JUST A FEW EXAMPLES FROM THE LAST YEAR:



THE HOPE PACK - A TOOLKIT FOR A FRIEND

The Hope Pack is a brilliant 21 day Christian resource for mental health. The pack is a tool used by a buddy who gets alongside a person living with a mental health issue to encourage and motivate them on their personal recovery journey. The pack supports the development of positive thought patterns and healthy behaviours in regards to nutrition, hydration, movement, fresh air, sunshine, and friendships. In doing so the pack empowers pastors, pastoral carers and families to walk alongside those journeying issues of mental health.

Authored by Lindy Gower in response to her own lived experience with mental illness, Baptist Care has partnered with Lindy to produce the Hope Pack, make it more widely available, and train and mentor churches in its use.

To purchase a Hope Pack, please call us on 08 8273 7100.

CHAPLAINCY AT THE RSL

For 30 years the Glen Osmond Baptist Church has faithfully provided a chaplain to support the staff and residents of the RSL War Veterans Home at Myrtle Bank. In recent times, the challenges of supporting a chaplain professionally and financially have put this at risk. To address this challenge, we are working with Glen Osmond Baptist Church as we now focus on the support of the Chaplain while the vibrant team of volunteers are free to concentrate on what they do best, caring for people.

CONNECTING COMMUNITIES

Through Rev Joanna Hubbard, we have provided consultancy services to churches working on connecting with their local neighbourhood to build community and prevent marginalisation and disadvantage.

- At Aberfoyle Park Baptist Church, leaders have considered what it would look like to create a space in which the community could be encouraged to share their skills and give their gifts equally with church members.
- The Soul Food Community are continuing to consider what it means to inhabit their local streets and create worship experiences that are truly responsive to the people who are a part of their café community.

- Leaders at Grange Baptist Church have begun a process of listening to their local community to see what themes, passions and concerns might emerge and where partnership might be possible. A great approach, and very different from creating programs for the community and hoping they will turn up.

The team is encouraged by these bright spots and the different way these churches are approaching their neighbours.

IF YOUR CHURCH
IS KEEN TO LEARN
MORE ABOUT
CONNECTING WITH
YOUR COMMUNITY,
PLEASE CALL US ON
08 8273 7100.



OUR PEOPLE

A GREAT PLACE TO WORK

Our people are at the heart of what we do!

We work hard to attract, develop and retain top talent – people who are values driven and who will strengthen our innovative culture. In 2015/16, we employed 347 new staff to meet the growing demands in our sector. Our total staff count as at June 2016 was 784. We continue to follow Child Wise recruitment and screening practices while recruiting new staff.

We understand that the high quality services we provide rest on the passion, skills and commitment of our workforce. It is our employees and volunteers who deliver our services and accomplish our organisational objectives. Therefore this year we implemented our Workforce Development Plan. This Plan covers the period 2016 to 2018 and was developed in consultation with the stakeholders to support

Baptist Care's strategic directions over the same period. As part of this Plan we have completed an in-depth analysis of our workforce and intend to work on our key focus areas, critical issues and also our future requirements.

Good recruitment and management practices have led to a reduced staff turnover of 25% in comparison to the previous year which was at 28%.

On the Work Health and Safety front, we continue to actively manage workers' compensation claims, supporting injured employees back into the workplace. External rehabilitation case management and implementation of early intervention strategies, such as return-to-work plans were provided to assist injured employees returning to work.



THANK YOU
TO ALL OUR
STAFF,
WE COULDN'T
DO THIS
WITHOUT
YOU!

VOLUNTEERING

"I'VE BEEN
VOLUNTEERING IN THE
KITCHEN AT WESTCARE
FOR 8 MONTHS NOW
AND LOVE IT BECAUSE
I GET TO HELP PEOPLE"

- VANESSA
WESTCARE VOLUNTEER



GENEROSITY OF SPIRIT

We are very thankful for the over 200 people who volunteered with Baptist Care in the last year. Volunteers play a key role in reaching out to those who are disadvantaged or vulnerable, helping them in practical ways and being a cheerful presence in their lives.

Here are a few areas where our volunteers shine:

- WestCare Centre - homelessness services
- Fuse Friendship Program - befriending a person from a refugee background
- Friends of Mylor Campsite (Bushcare)
- Family Mental Health Support Services
- Health and Wellbeing

If you are interested in volunteering with Baptist Care, please visit our website at www.baptistcaresa.org.au for available positions or email Bryan Hughes bhughes@baptistcaresa.org.au.

WE ARE GRATEFUL
FOR THE
VOLUNTEERING
SUPPORT WE
RECEIVE FROM
SCHOOLS AROUND
ADELAIDE.

THANKS ALSO
TO ALL THE
CHURCHES WHO ARE
INVOLVED IN
VOLUNTEERING.

- ABORIGINAL BEREAN COMMUNITY CHURCH
- ABERFOYLE PARK BAPTIST CHURCH
- ALDGATE BAPTIST CHURCH
- ENFIELD BAPTIST CHURCH
- FLINDERS ST BAPTIST CHURCH
- H21 CHURCH
- MOUNT BARKER BAPTIST CHURCH
- PLAYFORD BAPTIST CHURCH
- SLAVIC EVANGELICAL CHURCH
- UNLEY PARK BAPTIST CHURCH
- WEST BEACH BAPTIST CHURCH
- WESTCARE BAPTIST CHURCH
- VICTOR HARBOR BAPTIST CHURCH
- HOLY TRINITY ANGLICAN CHURCH
- BETHLEHEM LUTHERAN CHURCH

THE BRILLIANT COLOURS OF COMPASSION



SITTING WITH
THOSE WHO SIT
ALONE

Melanie and Erica are WestCare's newest pastoral care volunteers... but they do things a little differently.

Each week they set up a table and begin to do some 'mindfulness' colouring in - with an open invitation for anyone to join them or simply chat.

The exciting thing is, someone always does.

Erica explains how one man who sat with them was extremely shy, but the colouring

made things less intense. They weren't forced to look into each other's faces, which can feel confronting. With something else to focus on; they chatted freely as the bright colours spread their way across their pages.

"It's rewarding because you might have made someone's day a bit better just by passing some time with them," adds Melanie. "You don't need a qualification for that."



ENVIRONMENTAL REPORT

REDUCING OUR CARBON FOOTPRINT

Baptist Care continues to move forward in developing better environmental awareness with our staff and within our services. It is always our aim to minimise our environmental trail while continuing to provide excellent client centred services.

In the last year, we have been working with an App developer to look at how to best measure our carbon footprint across our services. This information will help us make better decisions going forward as we aim to reduce our impact on the environment.

QUALITY & EXCELLENCE

ENSURING THE BEST CARE FOR CLIENTS

Baptist Care has had many reasons to celebrate quality and excellence in the last financial year as we have aimed to deliver high standard services to our clients.

We have proactively pursued innovation in service delivery while continuing to support excellence through continuous improvement. Some key achievements are outlined here:

YES WE ARE A QIC ACCREDITED ORGANISATION!



NOVEMBER 2015

We achieved accreditation against the Quality Improvement Council (QIC) Standards, the highest accreditation standards within the health and community sector, at an organisational level. This was the successful result of several years of rigorous work at all staff levels. External assessors noted how much Baptist Care has matured in developing a culture of quality and safety for both clients and staff.

THE TOURISM TICK



FEBRUARY 2016

Baptist Care's Adventure Camping Services achieved the 'tick' of the Australian Tourism Accreditation Program.

A number of properties across different programs (including Youth Homelessness and Disability) were also licensed after meeting the South Australian Alternative Care Standards within January and May 2016.

NATIONAL STANDARDS FOR DISABILITY



JUNE 2016

Baptist Care's Disability Service successfully maintained its accreditation against the National Standards for Disability Services. This accreditation, which Baptist Care undertakes on a voluntary manner, put us at an advantage, especially with the upcoming rollout of the National Disability Insurance Scheme (NDIS) across the state.

PROTECTING CHILDREN



Baptist Care is in the final stages of the voluntary certification process against the Child Wise Standards of child protection. The implementation of these standards has seen Baptist Care strengthen its policies and practice to protect children in our care.

WHITE RIBBON STANDARDS



Baptist Care is currently accredited against the White Ribbon Standards, which expresses our concern and response to violence against women.

The current Quality Improvement Program (including projects such as Internal Audit, Client's Feedback & Complaints Collection, and the Staff Satisfaction Survey) will continue to build Baptist Care into a proactive and innovative organisation.

GOVERNANCE

Baptist Care is a Public Benevolent Institution dedicated to express and provide the love of God on behalf of the Baptist Churches of South Australia to people who are disadvantaged or marginalised. We are an Income Exempt Charity and have Deductible Gift Recipient status.

BAPTIST CARE BOARD

The Board meets monthly and is responsible for establishing the strategic direction of Baptist Care. It is responsible for monitoring the performance of Baptist Care’s activities and overseeing its financial commitments. In order to assist this monitoring, it has four Committees:



CHIEF EXECUTIVE OFFICER

The Chief Executive Officer is responsible for the everyday management of Baptist Care. Three committees report to the CEO:



The Board expects Baptist Care to observe high ethical standards. To ensure these standards are met, Board members, executives and employees are obliged to act with integrity according to their relevant codes of conduct.

BOARD MEMBERS



MR TIMOTHY JOHNSON, CHAIR

Rostrevor Baptist Church
Chair of the Governance Committee, member of the Corporate, Finance and Audit Committee
B Sc Chemical Technology

Mr Johnson has been on the Board since November 2011. Mr Johnson is the owner/director of an online software solution company and has experience in business and management.



MS JULIE LAWRIE, DEPUTY CHAIR

Clovercrest Baptist Church
Planning & Development Committee B (Business) Management, Assoc Dip Business - Human Resource Management & Industrial Relations

Miss Lawrie has been on the Board since May 2013. Ms Lawrie has significant experience in local church ministry and management and owns a marketing consulting business.



MR PAUL SCULLY, CEO

Grange Baptist Church
Member of all Board committees
BA, B.Th, M.Counselling, MA (Pastoral Care)

Mr Scully has been Chief Executive Officer of Baptist Care since January 2011. Mr Scully is a Member of the Australian Institute of Company Directors, has served on government and church advisory committees and has extensive board governance experience. Mr Scully was also previously a church minister in Queensland and a lecturer in community services at the University of Southern Queensland.



REV MICHAEL MILLS, STATE EXECUTIVE MINISTER, BAPTIST CHURCHES OF SA (EX OFFICIO)

Blackwood Hills Baptist Church (Village Church plant)
B Eng (Civil), Dip Th

Rev Mills has been an ex officio member of the Baptist Care Board since November 2008. Rev Mills is an Accredited Pastor with the Baptist Churches of South Australia and has significant pastoral leadership experience. He also has experience in inter-agency collaboration, leadership and community development.



REV JASON HOET, PRESIDENT OF THE BAPTIST CHURCHES OF SOUTH AUSTRALIA (EX OFFICIO)

Blackwood Hills Baptist Church
Baptist Care Church Ministry Committee, Governance Committee
B Eng, B Th

Rev Hoet has been on the Board since November 2014. He has over 20 years of experience as an Accredited Pastor with Baptist Churches of SA. He has worked within Church and 'para-church' organisations and is committed to the bringing together of Church communities. Rev Hoet has experience in governance, strategy and church engagement.



REV DANIEL BEASY

Rostrevor Baptist Church
Chair of Baptist Care Church Ministry Committee
B Ministry

Rev Beasy has been on the Board since April 2013. He is an Accredited Pastor with the Baptist Churches of South Australia with a significant track record in developing local church community ministry.

BOARD MEMBERS



MR DAVID CRINION
 Trinity Baptist Church
 Chair of Planning & Development
 Committee, member of Baptist Care
 Church Ministry Committee
 Dip Tech Town Planning

Mr Crinion has been on the Board since February 2014. Mr Crinion has experience in consultancies, and local and State government; with key skills in research, planning, development and policy.



MR TERRENCE FORRESTER
 Blackwood Hills Baptist Church
 Chair of the Corporate, Finance and
 Audit Committee

Mr Forrester has been on the Board since November 2014. He has over 44 years of experience in the Financial Services industry and has held positions at a number of large companies in Australia. Mr Forrester brings his extensive experience in business and management to the Board.



MR ROBERT LUNN, AM
 Rostrevor Baptist Church
 Governance Committee
 LLB (Hons), QC, Former Judge

Mr Lunn has been on the Board since March 2013. Mr Lunn is a retired judge, QC and a recipient of an AM (Member of the Order of Australia). He also has previous extensive board experience in the not for profit sector and lengthy local church ministry experience.



MS FRANCES HARDY
 Parkside Baptist Church
 Corporate, Finance and Audit
 Committee
 M Appl Sc Physiotherapy (Research),
 M Appl Sc Physiotherapy
 (Coursework), Grad Dip Health
 Science, Dip Tech Physiotherapy

Ms Hardy was appointed to the Board in December 2015. Ms Hardy has extensive experience in the Health Sciences (Physiotherapy) sector including as a lecturer, published author, conference presenter and currently is in private practice and lectures part-time at Flinders University.



MR ALLAN PACKER
 Parkside Baptist Church
 Governance Committee
 B Sc (Honours), Grad Dip
 Computer Science

Mr Packer was appointed to the Board in December 2015. He has extensive experience in the Information Technology sector including as a published author and is currently a Senior Principal Software Engineer of a major IT company. Mr Packer also brings governance experience in the not for profit sector as a past Chair of Scripture Union SA.

A BIG THANK
 YOU TO ALL
 OUR DEDICATED
 BOARD
 MEMBERS

financial
STATEMENTS

**INDEPENDENT AUDITOR'S REPORT TO THE MEMBERS
BAPTIST CARE (SA) INCORPORATED**

Report on the summarised financial statements

The accompanying summary financial statements of Baptist Care which comprises the summary statement of financial position as at 30 June 2016 and the summary statement of comprehensive income are derived from the audited financial statements of Baptist Care for the year ended 30 June 2016. We expressed an unmodified audit opinion on the full financial statements dated 26 September 2016.

The summary financial statements do not contain all the disclosures required by Australian Accounting Standards. Reading the summary financial statements, therefore, is not a substitute for reading the audited financial statements of Baptist Care.

Board of Governors' responsibility for the summary financial statements

The Board of Governors are responsible for the preparation of a summary of the audited financial statements in accordance with Australian Accounting Standards.

Auditor's responsibility

Our responsibility is to express an opinion on the summary financial statements based on our procedures, which were conducted in accordance with Auditing Standard ASA 810: Engagements to Report on Summary Financial Statements.

Opinion

In our opinion, the summary financial statements derived from the audited financial statements of Baptist Care for the year ended 30 June 2016 are consistent, in all material respects, with the audited financial statements, in accordance with Australian Accounting Standards – Reduced Disclosure Requirements.

MRL GROUP PTY LTD
Chartered Accountants



Mark LeCornu
Registered Company Auditor

26th September 2016

The summary financial statements have been derived from Baptist Care's full financial statements for the year ended 30 June 2016. The information included in the summary financial statements is consistent with the full financial statements.

The summary financial statements cannot be expected to provide as detailed an understanding of the financial performance, financial position and financing and investing activities of Baptist Care as the full financial statements.

The summary financial statements have been prepared on an accruals basis and are based on historical costs, modified, where applicable, by the measurement at fair value of selected non-current assets, financial assets and financial liabilities. They summary financial statements are presented in Australian dollars.

BAPTIST CARE (SA) INCORPORATED
SUMMARY STATEMENT OF COMPREHENSIVE INCOME
FOR THE YEAR ENDED 30 JUNE 2016

	2016	2015
	\$	\$
INCOME		
Revenue	46,249,079	35,949,283
EXPENSE		
Employee benefit expenses	36,545,611	28,020,765
Depreciation and amortisation expense	698,072	680,872
Other expenses from ordinary activities	4,843,965	5,074,913
	<hr/>	<hr/>
Operating Surplus	4,161,431	2,172,733
Gain (Loss) on disposal of assets	32,713	(721)
Net donation paid from Baptist Care (SA) Foundation	625,463	589,805
	<hr/>	<hr/>
Income for the year	4,819,607	2,761,817
	<hr/>	<hr/>
Transfer from (to) Spina Bifida Hydrocephalus Services Reserve	70,500	(45,500)
Transfer from (to) Special Projects Reserve	278,200	(250,000)
Transfer from (to) Individualised Services Project Reserve	125,000	(125,000)
Transfer from (to) St Lukes Distribution Reserve	213,163	0
	<hr/>	<hr/>
Total comprehensive Income for the year	5,506,470	2,341,317
	<hr/> <hr/>	<hr/> <hr/>

BAPTIST CARE (SA) INCORPORATED
SUMMARY STATEMENT OF FINANCIAL POSITION
FOR THE YEAR ENDED 30 JUNE 2016

	2016	2015
	\$	\$
ASSETS		
CURRENT ASSETS		
Cash and cash equivalents	13,736,455	9,353,066
Trade and other receivables	6,631,544	5,426,200
Other	61,254	57,954
	<hr/>	<hr/>
TOTAL CURRENT ASSETS	20,429,253	14,837,220
	<hr/>	<hr/>
NON CURRENT ASSETS		
Property, plant and equipment	11,636,610	11,104,898
	<hr/>	<hr/>
TOTAL NON CURRENT ASSETS	11,636,610	11,104,898
	<hr/>	<hr/>
TOTAL ASSETS	<u>32,065,863</u>	<u>25,942,118</u>
LIABILITIES		
CURRENT LIABILITIES		
Trade and other payables	3,035,539	2,025,080
Borrowings	0	3,000
Provisions	1,199,779	928,174
Other	1,493,484	1,468,410
	<hr/>	<hr/>
TOTAL CURRENT LIABILITIES	5,728,802	4,424,664
	<hr/>	<hr/>
NON CURRENT LIABILITIES		
Other	6,508	6,508
	<hr/>	<hr/>
TOTAL NON CURRENT LIABILITIES	6,508	6,508
	<hr/>	<hr/>
TOTAL LIABILITIES	<u>5,735,310</u>	<u>4,431,172</u>
NET ASSETS	<u>26,330,553</u>	<u>21,510,946</u>
EQUITY		
Retained surpluses	26,330,553	20,824,083
Reserves	0	686,863
	<hr/>	<hr/>



ACKNOWLEDGEMENTS

THANK YOU FOR YOUR SUPPORT

During 2015-2016, Baptist Care gratefully received funding or other support from the following groups:

AUSTRALIAN GOVERNMENT

- Department of Employment
- Department of Health
- Department of Immigration and Border Protection
- Department of Prime Minister and Cabinet
- Department of Social Services
- National Disability Insurance Scheme

STATE GOVERNMENT

- Attorney-General's Department
- Department for Communities and Social Inclusion
- Department for Education and Child Development
- Department of State Development
- SA Health

LOCAL GOVERNMENT

- Adelaide City Council
- City of Onkaparinga

NON-GOVERNMENT

- Anglican Community Care
- Australian Red Cross
- Life without Barriers
- Morialta Trust
- The Wyatt Trust
- Trees for Life

THANK YOU

YOUR SUPPORT AND GENEROSITY REALLY MAKE A DIFFERENCE

A big thank you to those who are part of the Baptist Care family.

To our churches and supporters, thank you for raising awareness about what we do, fundraising for us, praying with us and sending in cans of food to help those who are vulnerable.

To our donors, thank you for donating to our appeals and giving generously to help those in need.

To our volunteers and Board, thank you for sharing your precious time and standing alongside those who are doing it tough. Your spirit of generosity inspires us daily.

To our staff, thank you for the dedication and skill that you bring to each situation. Your creativity and passion are a big asset to our Baptist Care family.

We are blessed to be serving with you all. Thank you.



CAN YOU HELP?

If you would like to volunteer with us or make a donation, we'd love to hear from you.



FINANCIAL DONATIONS

Please donate online at
**[www.baptistcaresa.org.au/
donate-now](http://www.baptistcaresa.org.au/donate-now)**
or post a cheque to:
Level 2, Baptist Care House,
130 Rose Terrace,
Wayville SA 5034

Monthly or one-off donations can also be made via EFT transfer. Please contact our Head Office for more information on how to do this: 08 8273 7100 or enquiries@baptistcaresa.org.au.



IN KIND DONATIONS

In kind donations are often needed in the form of long life foods for the Emergency Relief program at Baptist Care's WestCare Centre. These should be delivered to WestCare at 11-19 Millers Court, Adelaide (off Wright Street).



VOLUNTEER WITH US

If you are interested in volunteering with Baptist Care, please contact Bryan Hughes: bhughes@baptistcaresa.org.au.

Thank you for being willing to partner with us as we serve our clients in South Australia.

Photography by Click Films, Joy Rodda, Linda Jordan, Anne van Loon, and The City of Playford.

WHOEVER IS
Generous
TO THE
Poor
LEADS TO THE
Lord AND HE WILL
REPAY HIM FOR HIS
Need
PROVERBS 19:17



Baptist Care

Level 2, Baptist Care House
130 Rose Terrace
Wayville SA 5034
PHONE: 08 8273 7100
FAX: 08 8272 4457
EMAIL: enquiries@baptistcaresa.org.au
www.baptistcaresa.org.au